

# RANDAL BREEN

Echo Valley Farm. Bundjalung Country, Qld






# BUNDJALUNG COUNTRY. GOOMBURRA, QLD

- 670 acres of previously farmed land and remnant vegetation.
- Brittle tending environment, 650mm rain/year, heavy black basalt soil
- Stacked integrated farming system focused on healing country, and building soil.
- Holistically managed Beef cattle: purebred Brangus cattle for seed stock production and grass fed and finished beef
- Pastured pig production: duroc based heritage pigs, fed on yield stream feed (food waste). Fertilization dispersers.
- Nomadic pastured hens: heritage breed ASP certified pasture raised landscape regenerator hens.
- Multispecies diverse fodder cropping and opportunistic integrated small crop production.







**WHY  
REGENERATIVE  
AGRICULTURE?**

In our 8 short years of farming, we have experienced a lifetime of environmental extremes.

Drought

Fire

Flood

Disease

Only through having a strong holistic vision have we been able to continue farming.



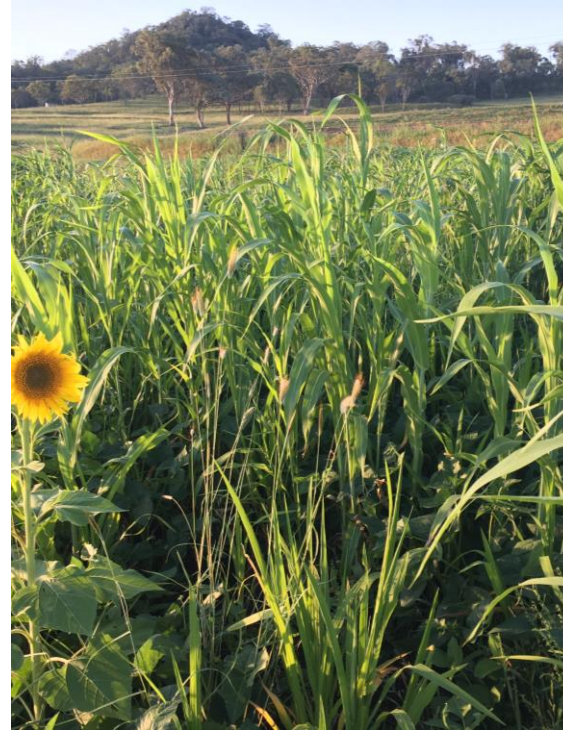


# ECHO VALLEY FARM

**PATIENT, ATTENTIVE, OBSERVER.**

**BUILDING AN INTIMATE RELATIONSHIP WITH OUR ANIMALS, THE LANDSCAPE, AND THE PEOPLE WE FEED.**





# BIO DIVERSIFICATION

THROUGH BUILDING DIVERSITY, WE BUILD RESILIENCE AND ULTIMATELY ABUNDANCE  
DIVERSITY OF PLANT, DIVERSITY OF SYSTEM, DIVERSITY OF FEED, DIVERSITY OF ANIMAL





# THE '4' GOODS

GOOD FOR THE ANIMAL. GOOD FOR THE LAND. GOOD FOR THE FARMER. GOOD FOR YOU!





# GOOD FOR THE LAND

- Minimize disturbance
- Maintain cover
- Maximize diversity
- Keep a living root in the soil
- Integrate livestock

Easier said than done.

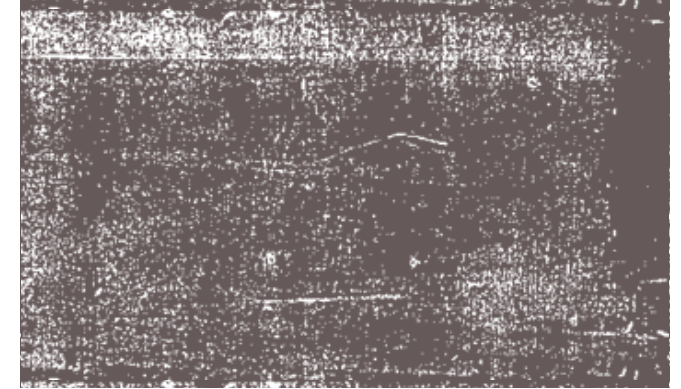
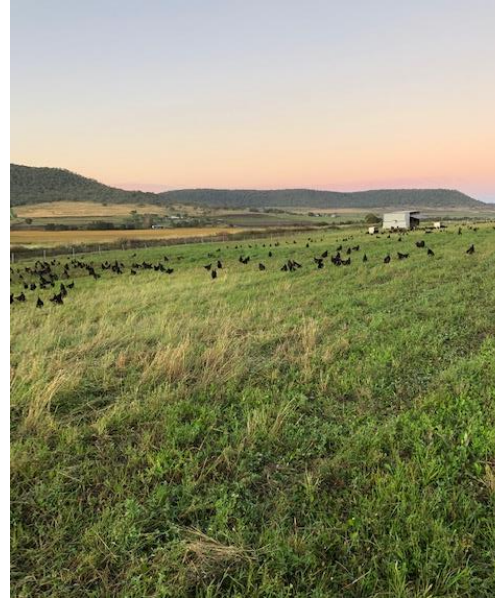
As humans we are linear thinkers and nature is a complex adaptive system. We have learnt over time that often the best solution is don't intervene... just observe.



# GOOD FOR THE ANIMAL

Farming Animals and Native Fauna contribute to a healthy regenerative environment.

- The interconnected relationship between animals-plants-soil has developed in chaotic harmony over millions of years.
- This cannot be replicated with the iron horse☺
- Its not a system of us and them
- A process of celebrating and utilization of the natural behaviors of the animals involved
- Celebrate the strengths of each animal allowing them to express their natural instincts.
- Heritage breeds become more vital in this system.







# GOOD FOR THE FARMER

- How do we address the current situation in agriculture and regional communities.
- Through the establishment of a relationship-based farming system.
- Creating not killing
- Establishing intimate relationships with the landscape, the animals, each other, and the people we feed.
- Looking beyond the sale reps glossy brochure for inputs.



# GOOD FOR YOU

- One thing the industrial food system has excelled at is removing people from the landscape.
- If we ensure the other 3 goods are taken care of, it is almost a given that it will be Good for the People we feed.
- It is vital in a truly regenerative farming system that we enable those that we feed the opportunity to deeply connect to the landscape that feeds them
- Increased soil health = increased human health.







**A DIVERSIFIED  
DISTRIBUTION MODEL  
HELPS BUILD  
RESILIENCE**

**Wholesale –  
Direct Supply**

**Retail –  
Online Shop**

**CSA Program**



# COMMUNITY SUPPORTED AGRICULTURE

- It gives the consumer the chance to gain a greater sense of where their food comes from.
- It creates community, engaging people in not just their food production system, but also with like minded individuals.
- The consumer receives a monthly box of fresh, nutrient dense and ethically produced food direct from a producer.
- It offers an alternative model of agriculture and food distribution that allows the producer and consumer to share both the risks and benefits of farming.





## **BUILDING RUSTED ON SUPPORTERS**

- Like no other food distribution model, a CSA program builds strong relationships with your farming partners/customers.
- This helps to shore up viability.
- During all manner of challenges during the farming process:
  - Drought
  - Livestock Mortality
  - Crop Failure



# Farming is... Community not Commodity



## PEOPLE POWER

**"I THINK I GET IT NOW — WE HELP THEM BECAUSE THEY HELP US WITH OUR FOOD"  
(CONNOR, 9YRS, ECHO VALLEY CSA MEMBER)**





**THANK YOU**

[www.echovalley.com.au](http://www.echovalley.com.au)